

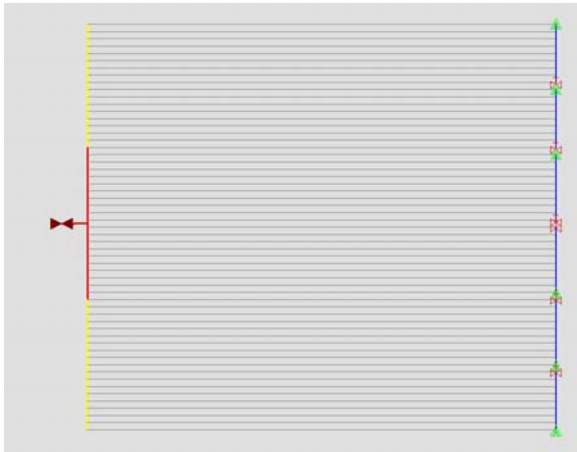
# IRRICAD PRO 9.5

## IRRIGATION DESIGN SOFTWARE

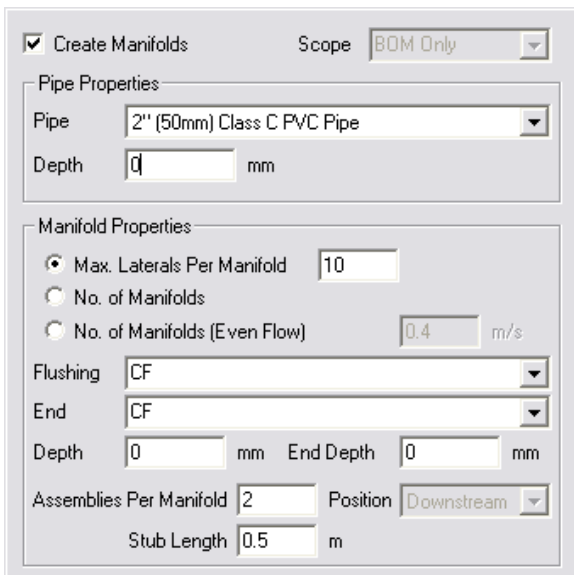
### The improvements keep coming - What IRRICAD Pro 9.5 Gives You

#### Automatic Flushing Manifolds

Flushing manifolds can now be created automatically for *Block Entities*. These manifolds may be used for fittings selection and generating Bills of Materials.



IRRICAD will automatically create the flushing manifold to your specification simply by filling in a few fields!



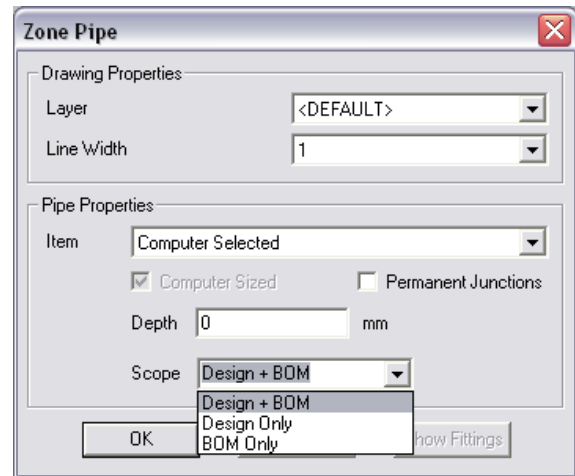
#### BOMs for Staged Development and Existing Systems

In previous versions the only way to produce a BOM/Costing report for staged development, or allow for existing equipment, was to create copies of a design and then delete the appropriate equipment as required.

Version 9.5 introduces the concept of *Scope*. This flag can be set for all hydraulic items, both individually and globally, and allows items to be designated as *BOM*

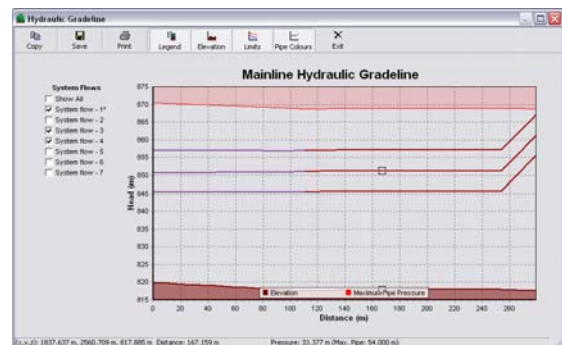
Only, *Design Only* or *Design + BOM*. This feature allows you to:-

- **Design, Analyse and cost extensions to existing systems.**
- **Easily produce costings and BOM for staged developments**



#### Mainline Hydraulic Gradeline

The "Hydraulic Gradeline" tool can now be used for Mainline pipes. The ground elevation, pipe pressure, maximum allowable pipe pressure can be shown for any or all system flows.



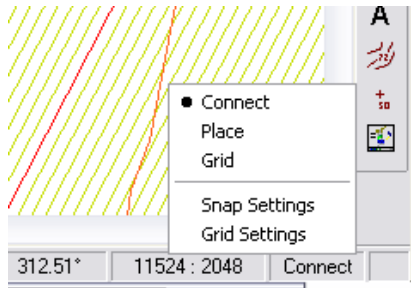
#### Improved Gradeline Dialog

The HGL dialog has been significantly enhanced with print, copy and save functionality added. Additionally the display of elevations, pressure ranges and limits can now be controlled.



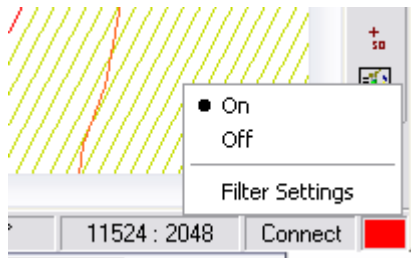
## Faster access to Snap Settings

A Snap Panel has been added to the Status Bar. This panel shows the currently selected default snap mode and allows quick access to the Snap and Grid settings.



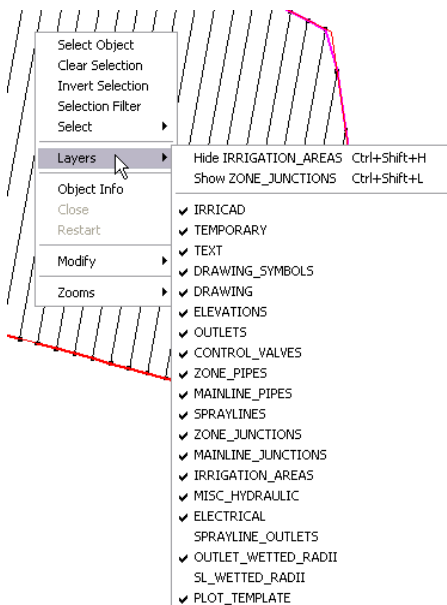
## Selection Filter Panel

The selection filter is a very useful tool but everyone who uses it will have at some time forgotten that it was on and wondered why they were unable to select anything. The new *Selection Filter Panel* helps to alleviate this problem by showing the status of the selection filter - a red panel indicates that the filter is active. The filter settings can also be accessed, and filter state toggled, from the panel.



## Quick Access to Layer Visibility

A fast method to enable or disable layers has been added to the right-click menu of the selection tools.



## New Selection Methods

The way the selection tools operate is now switchable. Two modes are available: the standard IRRICAD mode and a new "Windows Style" single selection method.

Clicking and dragging in the *Select Object* now operates as a *Window Select*.

Selecting Block entities can sometimes be difficult. Holding down the <ALT> key while clicking on any item that is part of the required block (e.g. one of the laterals) now selects the block entity.

## Object Info

The display of hydraulic information can now be controlled directly from the *Object Info* dialog.

## More Information

For more information on changes and new features in version 9.5, please consult the Release Notes and Readme.txt.

## Receive IRRICAD Pro v10.0 Free!

As part of our annual upgrade plan when you purchase IRRICAD Pro v9.5 you will also receive Pro v10, due out in December, free of charge. This will also entitle you to Priority Support until 10.5 is released (June 2010).

## Features that will be included in IRRICAD Pro v10 will be:

- Pressure and Flow labels for hydraulic items.
- Creation of "unconnected" sprayline Block Entities.
- Reporting capabilities for Energy and Capital costs so you can clearly show your client that you are providing the most economic design overall!
- Importation of GPS/GIS/CSV data.
- Conversion of lines and points to pipes and outlets. A great time saver when loading existing designs from DXF/DWG files.
- Hydraulic Gradelines for unconnected sprayline blocks.
- An improvement to *Update Labels* so that the positions, of labels that have been moved, are retained.
- Merging Designs.
- And many more...

## Purchasing Pro v9.5

Contact your IRRICAD Distributor for local Pricing

For further information, contact:

Jo Vivier  
AEI Software,  
PO Box 133, Lincoln, 7640,  
Canterbury, New Zealand  
Telephone No: +64 3 325-3718,  
Facsimile No: +64 3 325-3725  
Email: [support@IRRICAD.com](mailto:support@IRRICAD.com)  
Web site: [www.IRRICAD.com](http://www.IRRICAD.com)