

# IRRICAD PRO 10

## IRRIGATION DESIGN SOFTWARE

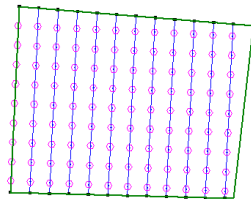
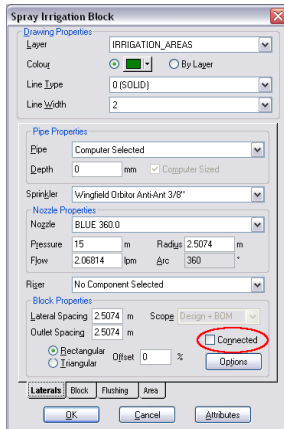
### The improvements keep coming - What IRRICAD Pro 10 Gives You

#### Improved Autocad Handling

Importing up to Autocad 2009 files with improved handling of layouts and Xrefs. If you have Pro Version 10 you will receive this as a patch in mid March.

#### Unconnected Spray Block Entity

It is now possible to specify that a sprayline block entity is 'unconnected' – that is create a block entity consisting of individual pipes and outlets rather than spraylines.



#### Valve Symbol Colours

Multi-colored symbols may be selected for Valves etc. If a symbol is specified with the "Use symbol colour(s)", in the database editor, then the symbol will be displayed using the colors contained in the symbol definition.

#### New Copy Tools

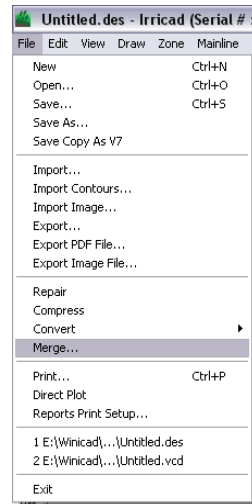
*Mirror Copy* and *Offset Copy* have been introduced and all *Copy* tools are now enabled for use with hydraulic objects.

#### New Modification Tools

*Trim* and *Extend* are now available to trim back to an existing item or to extend to an existing item.

#### Merge Designs

Yes it is finally back! IRRICAD designs may now be merged together using the *Merge...* option in the *File* menu. This function merges all drawing and hydraulic objects, as well as fittings selection, Management and Design information.



#### Hydraulic Item Creation

All hydraulic and electrical items can now be created from relevant drawing items. By simply highlighting a drawing item you can turn it into an Area, Outlet, Pipe, Control Valve, Pump, Irrigation Block, Light, Controller, Wire, Misc. Electrical, Misc. Hydraulic, Sprayline or Tape.

#### New Toolbars

Toolbars can now be modified and re-arranged, with better icons and big buttons for laptop screens:



#### Importation of GPS/GIS/CSV data

Drawing and elevation data from CSV and ESRI SHP files can now be directly imported into IRRICAD.

Elevation data is entered via *File|Import Contours* while *File|Import* is used for normal drawing information.

#### Draw Order

*Z-Order* tools, *Move to Front* and *Move to Back* will allow specification of which order items are drawn. Helpful when placing images on top of plot layouts.

#### Exporting Reports to Excel

Report templates can now be made that save directly to a file. These files may be opened by Excel.

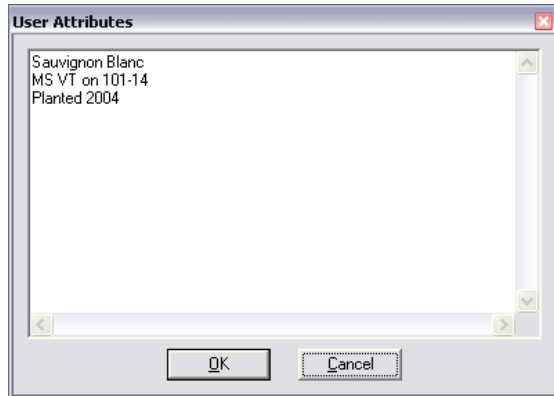
#### New Manual with Pro Version 10

A new on-line manual is available with Pro version 10. This can also be downloaded as a PDF or purchase the hard copy.

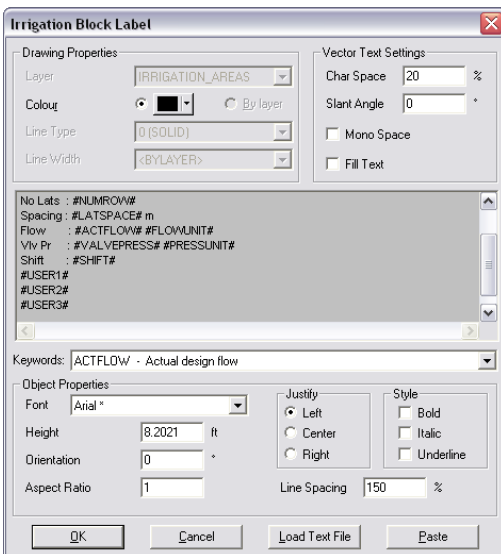
## User Attributes and User Keywords

A 'User Attributes' field has been added to control valves, water supplies, block entities and miscellaneous hydraulic items. It allows the user to attach any textual information, to these items, that can be subsequently displayed in labels and reports.

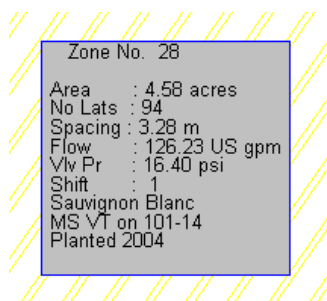
For example for an Irrigation Area:



Adding the appropriate keywords to the label settings for Irrigation blocks:-



Will produce labels similar to this example.



## Hatch and Fill Editing

The colour and the layer of an existing *Fill* entity may now be changed.

*Hatch* editing has also been enabled, allowing all properties of a hatch to be changed.

## Multiple Water Supply Systems

Designs with multiple but separate water supplies can now be fully analyzed (and *LP Design* used where appropriate) directly. It is no longer necessary to 'join' the separate systems with notional pipes.

## Label Changes

### New Keywords

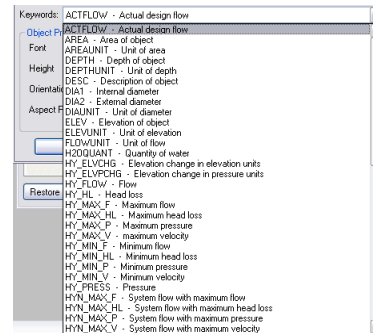
More comprehensive hydraulic labeling has been enabled with the introduction of several new label keywords. New labels include maximum and minimum Pressures, Flows, Headlosses and Velocities, Flow per Area, Number of emitters, Group Spacing, Laterals per group and Row Spacing.

### Label

When updating labels, IRRICAD now retains the position you moved the label to if it has been moved.

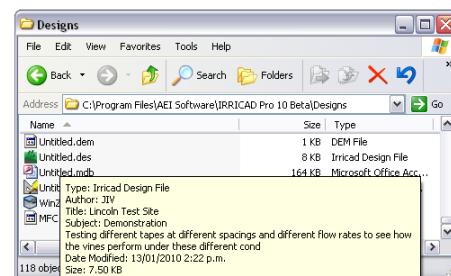
### Keyword Combo

A keyword dropdown box has also been added to the *Label* text dialog. This displays and briefly describes the label keywords, and allows them to be easily inserted.



## Document Summary Info

Design details are now copied to the design file properties summary information section, allowing specific designs to be more readily identified in Windows Explorer.



## More Information

For more information on changes and new features in Pro Version 10, please consult [Recent Developments](#) on our website.

## Receive IRRICAD Pro v10.5 Free!

As part of our annual upgrade plan when you purchase IRRICAD Pro v10 you will also receive Pro v10.5, due out in July, free of charge. This will also entitle you to Priority Support until v11.0 is released (December 2010).

**Keep an Eye on the Website for what will be included in IRRICAD Pro v10.5!**